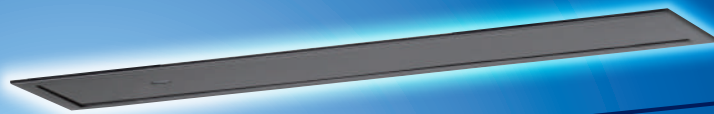


Active Infrared Door Sensor

MIRAGE T



Recess Mount

Optex Mirage T is designed to be installed in the header of the door operator or as a built in ceiling mount sensor.

It offers you both safety and activation on all types of automatic doors.

It combines easy adjustable settings, providing maximum safety in a wide array of applications.

Active Infrared Door Sensor **MIRAGE T**

Elegant solution for design conscious applications The Optex Mirage T is designed for installation in the header of the door operator.

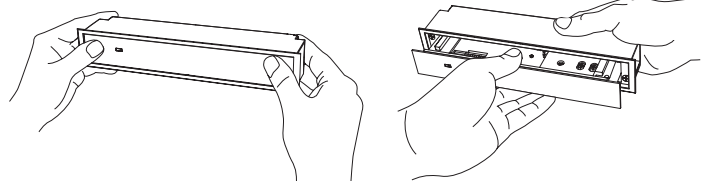
Due to its recessed mounted design and the 2 rows of presence detection, this sensor is an elegant and safe solution for applications where design of appearance is very much emphasized.

Monitoring Capability

Mirage T has built-in "monitoring capability". The Mirage T monitors all its critical functions and notifies compatible controls when an error occurs. Self monitoring capability ensures a higher level of performance over the

One Push Opening Body Structure

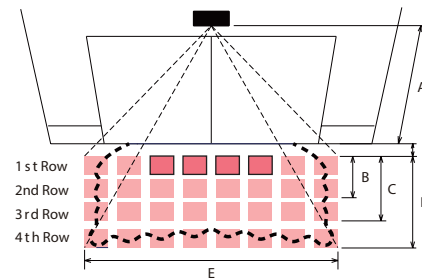
By pressing the detection window, The main body appears. It is so easy to setting and adjustment.



Specifications

Model	MIRAGE T
Mounting height	2.0 to 3.0 m (6'7" to 9'10"), for EN 16005 2.0 to 2.5 m (6'7" to 8'2")
Detection area	See Detection area
Detection method	Active infrared reflection method
Depth angle adjustment	-6° to +2°
Power supply (*1)	12 to 24 VAC±10% &(50/60 Hz), 12 to 30 VAC±10%
Current draw	200 mA max. (at 12 V DC)
Operating indicator	See Operating indicator
Output contact	Form C relay 50 V, 0.3 A max.
Activation output	Form A relay 50 V, 0.3 A max. (Resistance load)
Safety output	Form A relay 50 V, 0.3 A max.
Relay hold time	0.5s
Operating temperature	-20 to +55° C (-4 to +131°F)
Outer dimensions	244 x 50 x 43 mm (w x h x d)
Weight	210 g (7.4 oz)
Accessories	Accessories 3m Connection cable, area adjust ment tool

Detection Area

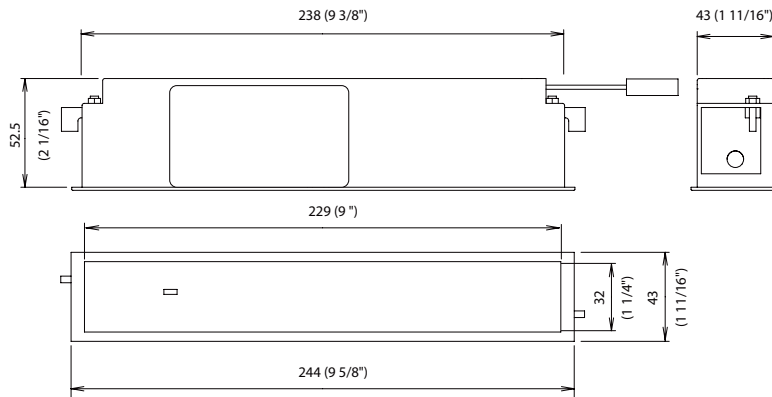


Unit: m (feet)

A	2.00 (6'7")	2.20 (7'3")	2.50 (8'2")	3.00 (9'10")
B	0.04 (2")	0.05 (2")	0.05 (2")	0.05 (2")
C	0.20 (8")	0.22 (9")	0.25 (10")	0.27 (11")
D	0.46 (1'6")	0.50 (1'8")	0.57 (1'11")	0.63 (2'1")
E	0.84 (2'9")	0.92 (3')	1.05 (3'5")	1.23 (4')
F	1.34 (4'5")	1.48 (4'10")	1.68 (5'6")	1.96 (6'5")

Dimensions

mm (feet, inch)



Manufacturer / Asia sales Div.

OPTEX CO.,LTD.

5-8-12 Ogoto Otsu Shiga 520-0101 Japan
TEL.: +81-77-579-8360 FAX.: +81-77-579-8190

Asia Sales Div.

TEL.: +81-77-579-8030 FAX.: +81-77-579-8136
WEBSITE: www.optex.co.jp/as/eng/index.html

North and South American Subsidiary

OPTEX INCORPORATED. AMERICAS HEADQUARTERS

18730 South Wilmington Ave. Suite 100 Rancho Dominguez, CA 90220 U.S.A.
TOLL-FREE: 800 877 6656 FAX.: +1 310 214 8655
WEBSITE: www.ot-inc.com

East Coast Office

8510 McAlpines Park Drive, Suite 108 Charlotte, NC 28211 U.S.A.
TOLL-FREE: 800 877 6656 FAX.: +1 704 365 0818
WEBSITE: www.ot-inc.com

European Subsidiary

OPTEX Technologies B.V.

Henricuskade 17, 2497 NB The Hague, The Netherlands
TEL.: +31(0)70 419 41 00 FAX.: +31(0)70 317 73 21 E-MAIL: info@optex.eu
WEBSITE: www.optex.eu

Thailand

OPTEX (THAILAND) CO., LTD.

90 CW Tower (Tower B) Unit B1702, 17 Floor,
Ratchadaphisek Rd., Huai Khwang, Bangkok 10310
TEL.: +66-2-168-3162
WEBSITE: <https://optex-asean.com/>