

Easy installation

Remove the top cap and piece the knockout. Insert the ribbon cable, connect terminals and mount the PCB board within the VXI back box. Fix the camera mount of VXI-CMOD on the top of VXI and mount VXI-CMOD on VXI and fix it with a lock screw.

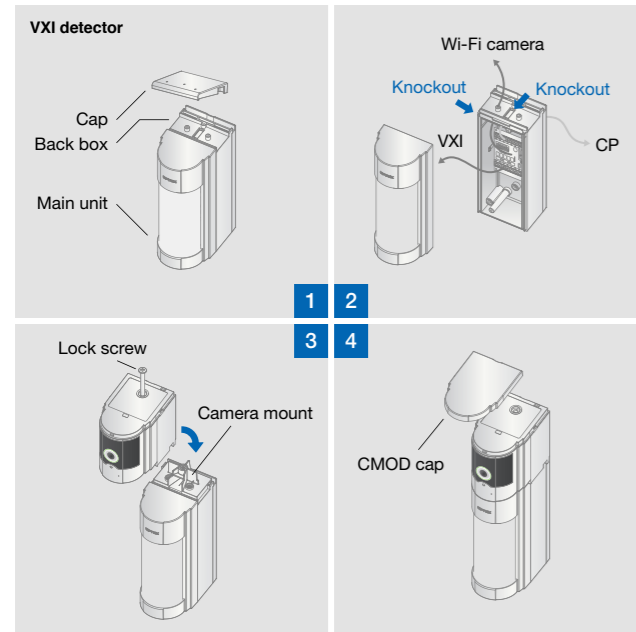


Image example

Daylight

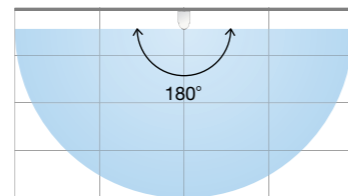


with IR light

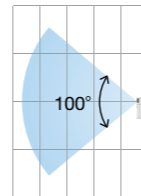


Camera field of view

Top view



Side view



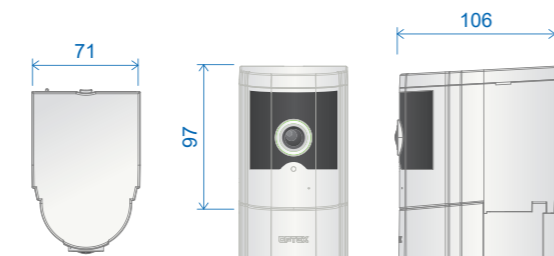
Specifications

Model	VXI-CMOD
Wireless connectivity	IEEE 802.11 b/g/n
Data encryption	AES 128-bit data encryption via proprietary P2P connection protocol
Security	WEP/ WPA/ WPA2 (TKIP, 128-bit AES)
Simultaneous viewers	Max.3 concurrent viewers *Performance may be impacted when connecting to multiple smartphone simultaneously.
Image sensor	2 Megapixel or Full HD
Image resolution	1,080 P/ 720 P/ VGA (Selectable by APP)
Viewing angle	H: 180° V: 100°
Minimum illumination	0 lux (with IR illumination)
Night vision	IR LED with IR-Cut switcher
Image compression	H.264 High profile
Image resolution	Full HD
Frame rate	15 FPS
Recording period	30 sec. (inc. 2 s pre-record)
Memory Storage	microSD card (32 GB max.) Not included/ Only FAT 32 format compatible/ Format with OPTEX Vision APP.
Power supply	9.5 to 24 V DC
Power consumption	IR low mode : 400 mA max. / IR high mode : 1.0 A max.
Wake up time	2 min.
Recording trigger1	Alarm, Tamper, Trouble (N.O./N.C.)
LED indicator	1 LED (red and blue)
Microphone	1 input
Mode selector	high/low
Internal/ External antenna selector	Internal/ External selectable External antenna [CMOD-ANT] is separate option
Location	Outdoor/Indoor
Operating temperature	-10°C to +50°C
Operating humidity	90% max. (Non condensed) TBE
IP rate	IP 55
Weight	280 g

• Web service is subject to be terminated without prior notice.
• Specifications and designs are subject to change without prior notice.

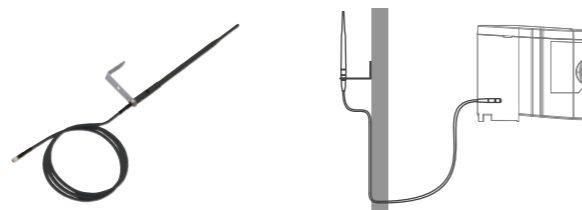
Dimensions

Unit: mm



Options

External antenna and cable (CMOD-ANT)



Web based manual

navi.optex.net/manual/50262



Visual Verification Wi-Fi CAMERA module

Camera module for VXI-ST/AM/DAM

VXI-CMOD

The VXI-CMOD outdoor Wi-Fi camera module offers an integrated solution with VX Infinity outdoor detector series : it is 1080P HD night vision camera with 180 degree panoramic angle and IR LED. The outdoor detector "VX Infinity series" provides high reliable sensor trigger recording function in outdoor environment for visual verification. In addition to new installation, it can be a retrofit solution by adding the VXI-CMOD on VX Infinity outdoor detectors which are already installed.



OPTEX Vision

Dedicated smartphone App. for VXI-CMOD is available in the App Store and Google Play.

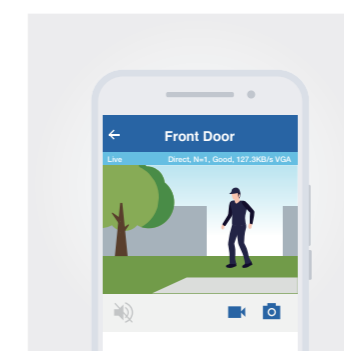


VXI-ST/AM/DAM is separately available

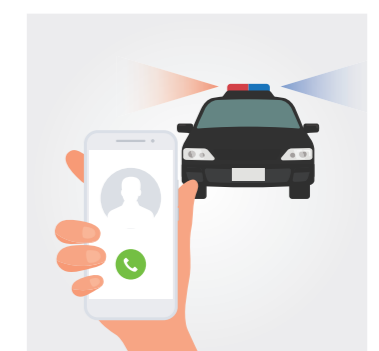
The VXI-CMOD provides both pre & post alarm recording of our VXI wired sensor. The recording can then be verified via your smartphone and the appropriate action can be taken.



Detect



Verify



Call



OPTEX CO.,LTD. (JAPAN)
www.optex.co.jp/e

OPTEX INC. / AMERICAS HQ (U.S.)
www.optexamerica.com

OPTEX (EUROPE) LTD. / EMEA HQ (U.K.)
www.optex-europe.com

OPTEX TECHNOLOGIES B.V. (The Netherlands)
www.optex.eu

OPTEX SECURITY SAS (France)
www.optex-europe.com/fr

OPTEX SECURITY Sp.z o.o. (Poland)
www.optex-europe.com/pl

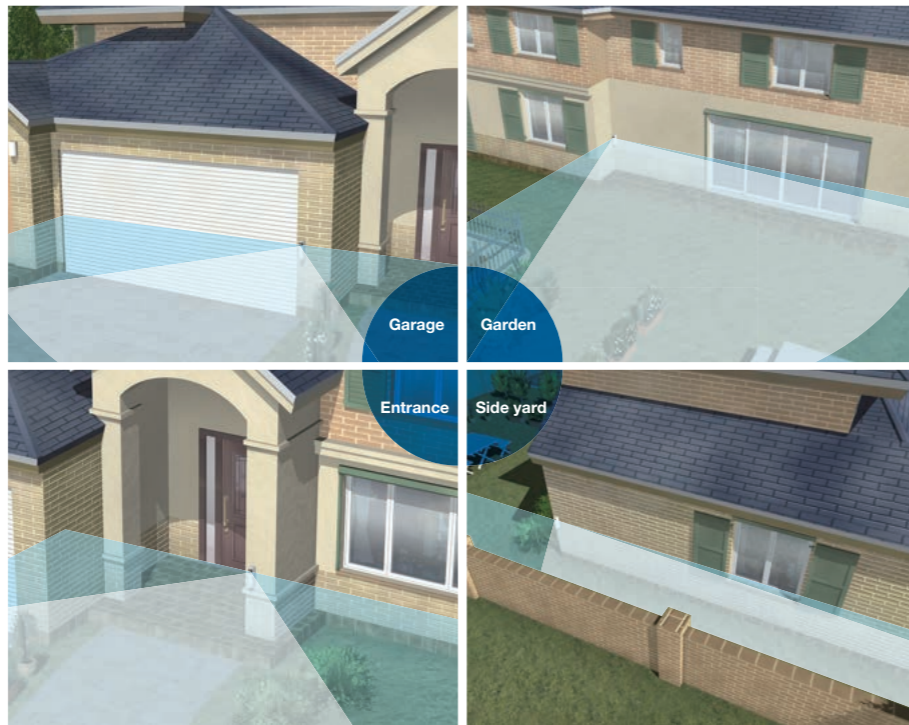
OPTEX PINNACLE INDIA, PVT., LTD. (India)
www.optexpinnacle.com

OPTEX KOREA CO.,LTD. (Korea)
www.optexkorea.com

OPTEX (DONGGUAN) CO.,LTD.
SHANGHAI OFFICE (China)
www.optexchina.com

OPTEX (Thailand) CO., LTD. (Thailand)
www.optex.co.th

Keep an Eye on your premises.



Features

180 degree panoramic view angle and Night vision with strong & wide IR light

VXI-CMOD could capture an intruder

Many cameras have a narrow view

180°

Microphone is integrated

XXXXXXX
XXXXXXX

XXXXXXX
XXXXXXX

Sensor triggers recording function with 2 sec. pre-recording.

Record

Verify

Pre 2 sec. Alarm Post 28 sec.

Power from a control panel can be used for both VXI-CMOD and VXI.

External PCB terminal is located in the back box

Power
Alarm, Tamper and Trouble signal

Problem solving



You don't have to look out through the window.

I want to investigate a disturbance from the safety of my home.

You don't have to look it through the window because you can see it through a smartphone application even at night with IR light.

A simple security system without Control Panel

It's so expensive to buy a security system with control panel. A text alert message lets me know just something happens at my house. But I can't verify it.



VXI and VXI-CMOD provides you with a simple security system by a notification function and a visual verification.



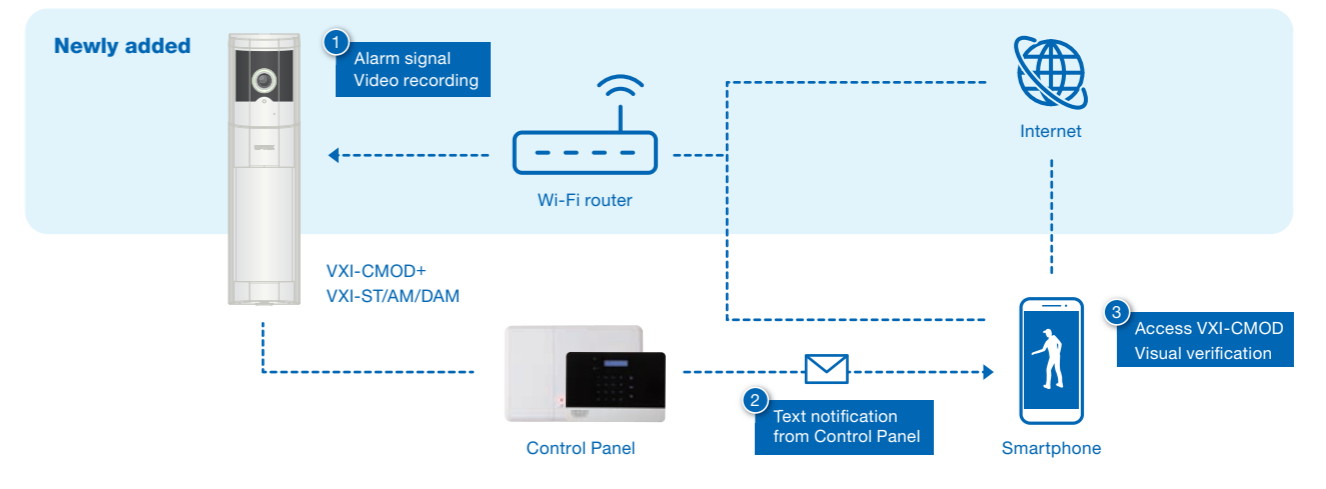
Minimize miss-capture

I want to verify an intrusion and receive notifications of an activation.

Nuisance alarms can be quickly identified with the cameras 180 degree wide angle field of view with both pre & post recording.

System Diagrams

Add VXI-CMOD on your existing security system with OTEX VXI series.



Create a notification & visual verification system without Control Panel

